

# TEMPERATURE SENSOR



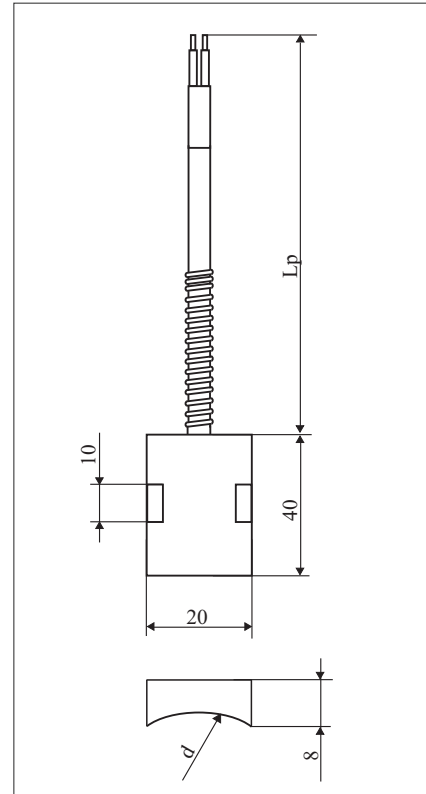
## T-217a

### Applications:

Temperature sensor for measurement on pipelines and other cylinder elements.

### Technical Data

Measuring range	up to 400°C
Measuring insert	NiCr-NiAl (K) PN-EN 60584 others (J,L,T,E,N) IEC 584
Protection tube material	stainless steel 1H18N9T (1.4541) brass
Connecting cable	insulation fiberglass x 2 overbraided (standard)



### Ordering code

T	-	217a	-	-	-	-	-	-	-
Insert design		single		no signs					
Thermocouple type		NiCr-NiAl (K)		K					
Pipeline diameter d		∅ 10 mm		10					
Cable length Lp		1,5 m		1,5					
Tolerance		class 2		2					
Connecting cable		1 - fiberglass x 2 - overbraided		1					

### Order example:

T-217a-K-10-1,5-2-1- thermocouple sensor type K, pipeline diameter d=50 mm, length Lp=1,5 m, class 2, insulation cable fiberglass x 2 - overbraided.