

TEMPERATURE SENSOR

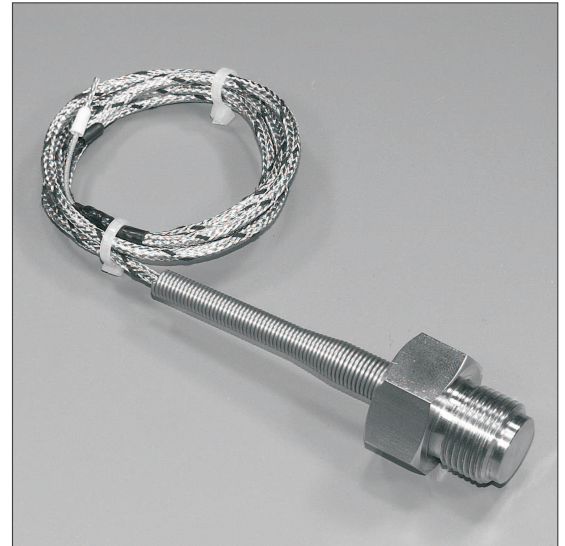
T-230b

Applications:

Temperature sensor for measurement of moving parts of machinery.

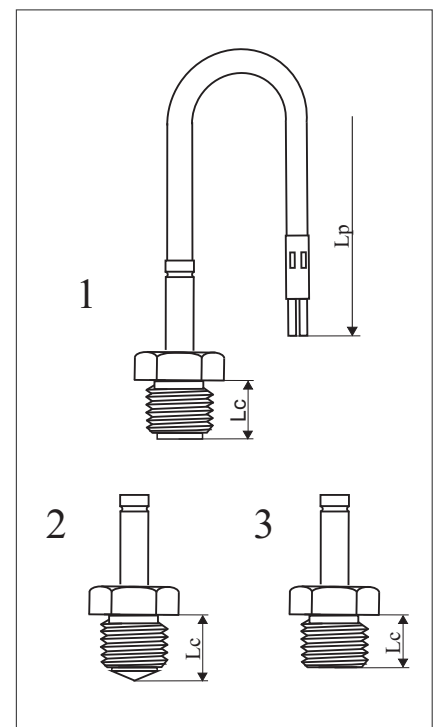
Technical Data

Measuring range	up to 400°C (784°F)
Measuring insert	NiCr-NiAl (K) PN-EN 60584 others (J,L,T,E,N) IEC 584
Protection tube material	stainless steel 1H18N9T (1.4541)
Connecting cable	insulation fiberglass x 2 overbraid (standard)



Ordering code

T	-	230b	-	-	-	-	-	-	-
Thermocouple type									
NiCr-NiAl (K)									K
others (J,L,T,E,N)									
Process connection dimensions									
M20x1,5									M20x1,5
others									
Sensor length Lc									
20 mm									20
others									
Cable length Lp									
1,5 m									1,5
others									
Ending type									
type 1, 2, 3									e.g. 1
Tolerance									
class 2									2



Order example:

T-230b-K-M20x1,5-20-1,5-1-2- thermocouple type K, with thread M20x1,5, sensor length Lc=20 mm, length Lp=1,5 m, ending type 1, class 2.